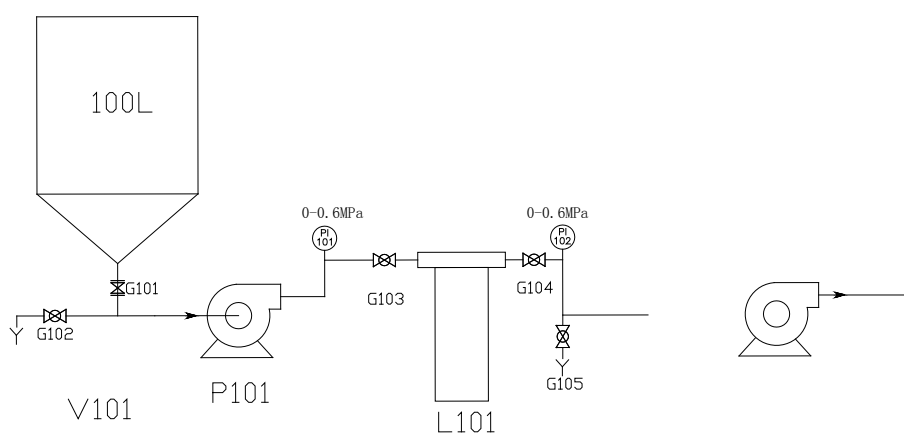




.....	2
.....	2
.....	3
.....	4
.....	4
.....	6
.....	6





1. ,
- 15- ,
- Bar
- 4.
- 5.
6. 1 4040 4040 7.5
- 50—5
- 7.
- 8

	WTM-4040UHP-1
	4040
	7.5
	1
	12.0Mpa
	5—45
PH	1--11
	15L
	250L/H
	50—100L/h
	50—500L
	5.5KW@380V
	1.6m* 1m* 2m

1					1	
2		<sup>3</sup>	FRPP		1	
3					1	
4		5.5kw			1	ABB
5		<sup>3</sup>			1	cat
6		PV4040-1000S			1	ROPV ( )
7		PV4040-1800S			1	
8	RO	100 7.5			4	
9		160Bar				
10		0-			1	
11		0-			1	
12		0-100				
13		MPa			1	
14		6			1	
15		6				
16	Y	1			1	
17					1	
18					1	
19		5.5KW			1	
20					1	

000.00

30

3

1

17%



