



WTM-DT210D

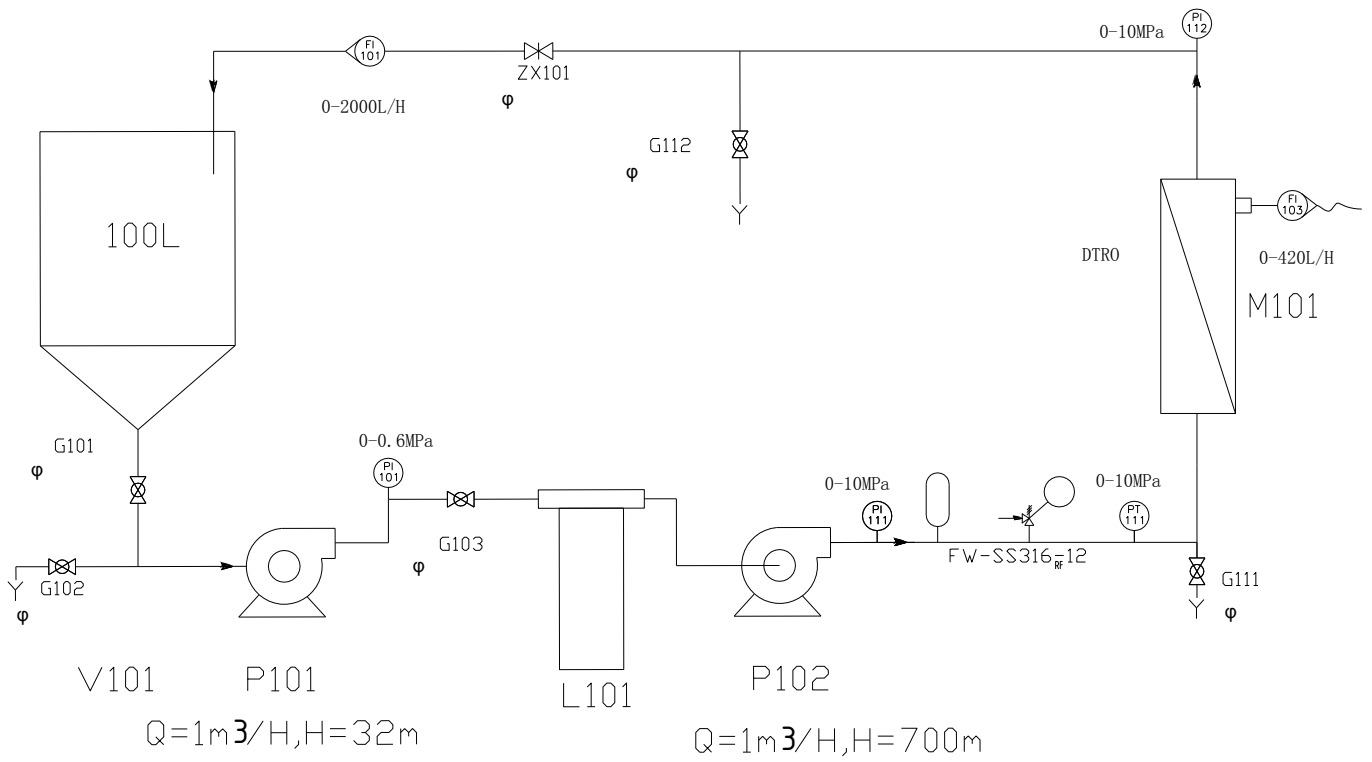
7.5MPa

	.....	2
	.....	2
	.....	3
	.....	4
	.....	5
DTRO	.....	6
	.....	7

DTRO

DT  
DTRO  
DTNF  
DT  
75Bar  
4mm

DT



V101 P101 P102 M101

1

V101 G101 G103 ZX101 G102

G111 G112 P101 P102

2

V101 G101 G103 ZX101 G102

G111 G112 P101 P102

ZX101

V101

3

1. ,
2. <15L ,
3. CAT  
75Bar
- 4.
5. SDI 20  
/  
3
6. DTRO 210 209 9.4  
100 200L/H, 50 200L
7. 316L
- 8.

DTRO

---

1		100L	SS316		1	
2		Q=1m /H, H=32m	SS316		1	
3		6 5μ m PP			1	
4		Q=1m /H, H=700m	SS316		1	wanner
5		B35 5.5KW			1	ABB
6		75Bar RO			209	DOW
7					1	
8		Y60 0-10MPa	SS316		2	
9		0-10MPa	SS316		1	DANFOSS
10		0-7L/M			1	
11		0-30L/M			1	
12		5.5KW			1	
13		1/4"	SS316		1	
14		0.2L	SS316		1	
15		1/4"	SS316		1	
16			SS304		1	
17			SS316L		1	
18					1	
19					1	

: 0000 .00 ( )

1

2

3

17%

**DTRO**

DTRO		
		WTM-DT210D
		209 9.4
		3.0-7.5Mpa
		<b>7.5MPa</b>
	*	<b>99.5%</b>
		5 40
		45
	PH	2 11
	pH	1 12
		<15L
		50-200L
		20-25%
		120-200L/H
		Q=1m /H
	DT	

\*

15%

NaCl 32,000mg/L @800 psi (5.5MPa)

